



Rathfarnham ETNS -
A School Community Committed to Restorative Practice

www.connectrp.ie
@connect_rp
www.mstowerp.wordpress.com

What is Restorative Practice?

Restorative Practice is a process that focuses on repairing harm caused by wrongdoing and restoring relationships between those affected.

- Restorative Practice is a process that focuses on repairing harm caused by wrongdoing and restoring relationships between those affected.
- Restorative Practice is a process that focuses on repairing harm caused by wrongdoing and restoring relationships between those affected.
- Restorative Practice is a process that focuses on repairing harm caused by wrongdoing and restoring relationships between those affected.

Why is it a Restorative Practice?

Restorative Practice is a process that focuses on repairing harm caused by wrongdoing and restoring relationships between those affected.

What is Restorative Practice?

Restorative Practice is a process that focuses on repairing harm caused by wrongdoing and restoring relationships between those affected.



Rathfarnham ETNS -
A School Community Committed to Restorative Practice

www.connectrp.ie
[@connect_rp](https://twitter.com/connect_rp)
www.mstowerp.wordpress.com

Today's Intention

...to explore and discuss the philosophy, motivation and skills of Restorative Practice (RP) in school communities...

of resolution and clarity in
The degree of clarity in
which a televised image
broadcast signal is rec
def-i-ni-tion n. 1.
The teacher gave de
of the new words.
of an image (pict
-- 1937 screen



Restorative Practice is a **values-based philosophy**; it aims to consciously **build relationships** and **respond to harm / conflict** in a way that honours relationships which **CONNECTs** us to our best selves and to one another.

(Stowe 2017)

Restorative Practice



Relationships

Proactive

Responsive



Philosophy

Set of Skills



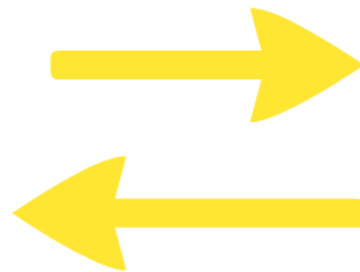
Builds
positive
relationships

RA



Respond
to harm /
conflict

Restorative Practice



Relationships

Proactive

Responsive

Why bother - Motivation?

What is it - Philosophy?

How - Mechanics?

Why bother? Motivation

Good relationships need to be at the heart of everything if effective teaching and learning are to take place.
(Hargrave, B 2004)

Restorative School Approach

- Happier and safer schools
- Improved emotional climate - develops RP
- More fully respectful relationships
- More effective teaching and learning
- Reducing exclusion/suspensions
- Raising attendance / attainment

what is it - Philosophy?

Educate Together

Restorative Values

CONNECT

Respect
Empathy
Integrity
Self-awareness
Self-regulation

How of RP - Mechanics?

RP fosters the use of explicit practices including:

- 51 Relationship SCALE
- Fair Process
- Restorative Language (Statement & Questions)
- Circles
- Meetings
- Conferencing

Why bother? Motivation

Good relationships need to be at the heart of everything if effective teaching and learning are to take place...

(Hopkins, B. 2004)



Restorative School Approach

- Happier and safer schools
- Improved emotional climate - developing EQ
- Mutually respectful relationships
- More effective teaching and learning
- Reducing exclusion/ suspension
- Raising attendance / attainment

Met UXP - (N/A)

Good relationships need to be at the heart of everything if effective teaching and learning are to take place...

(Hopkins, B. 2004)



Restorative School Approach

- Happier and safer schools
- Improved emotional climate - developing EQ
- Mutually respectful relationships
- More effective teaching and learning
- Reducing exclusion/ suspension
- Raising attendance / attainment

What is RP - Philosophy?



What is RP - Philosophy?



1. What values do you really care about? / What values do you promote in your home?
2. What do these values look like / sound like / feel like?
3. Consider the mission /vision /ethos /values of the school/ ET - how do we bring them to life?

What is it - Philosophy?



Educate Together

c h a r t e r

Equality-based
i.e. all children having equal rights of access to the school, and children of all social, cultural and religious backgrounds being equally respected.

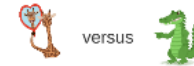
Child-centred
in their approach to education.

Co-educational
and committed to encouraging all children to explore their full range of abilities & opportunities.

Democratically run with active participation by parents in the daily life of the school, whilst positively affirming the professional role of the teachers.

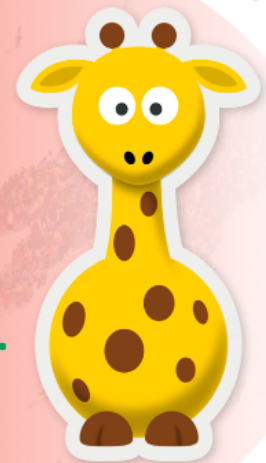
Restorative Values

CONNECT



versus

Fair
Respect
Inclusive
Empathy
Nurture
Did you...
Safe



www.connectrp.ie
© ConnectRP

Stowe, 2017

CONNECT
RP

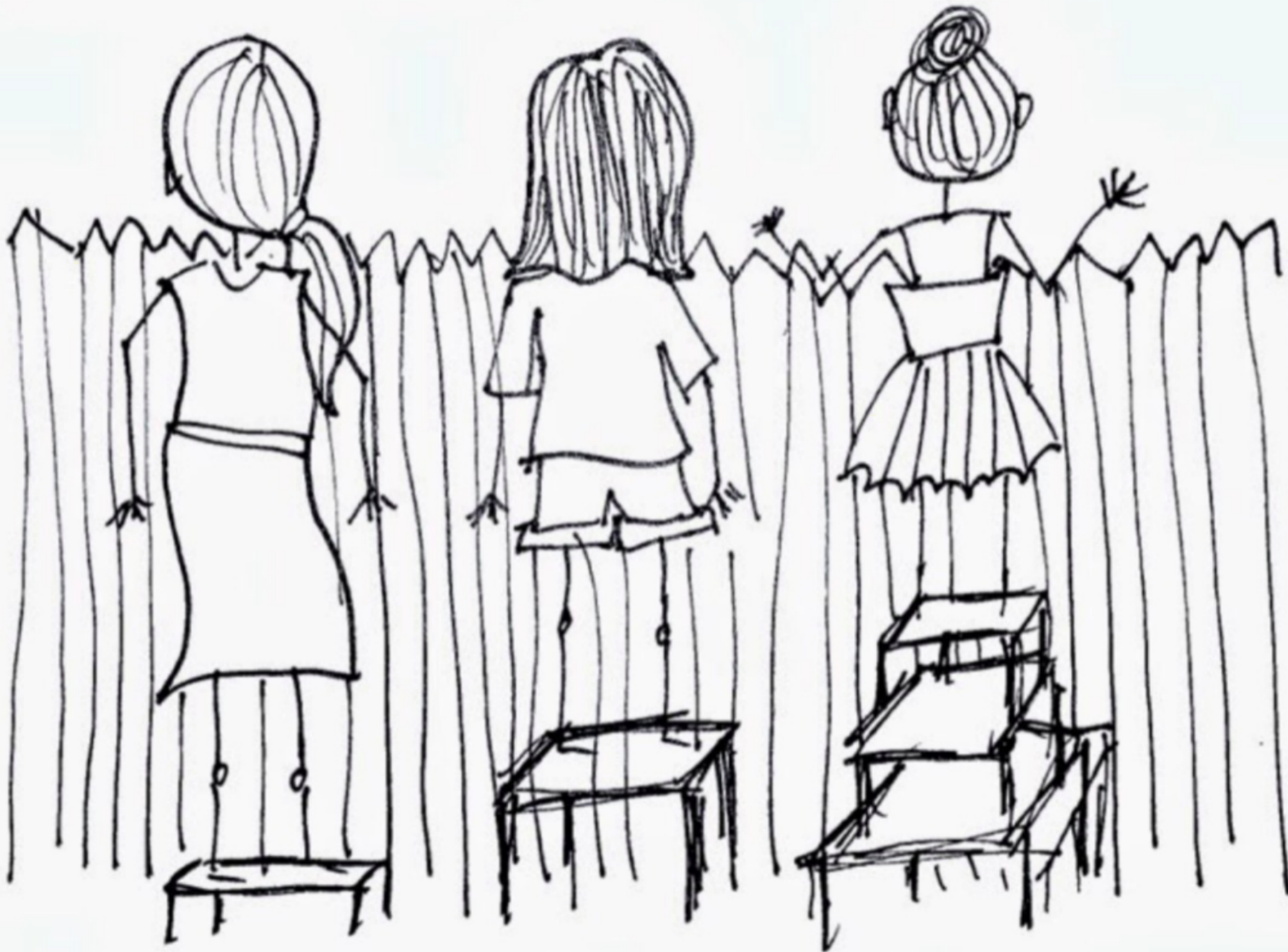


versus



Fair
Respect
Inclusive
Empathy
Nurture
Did you...
Safe







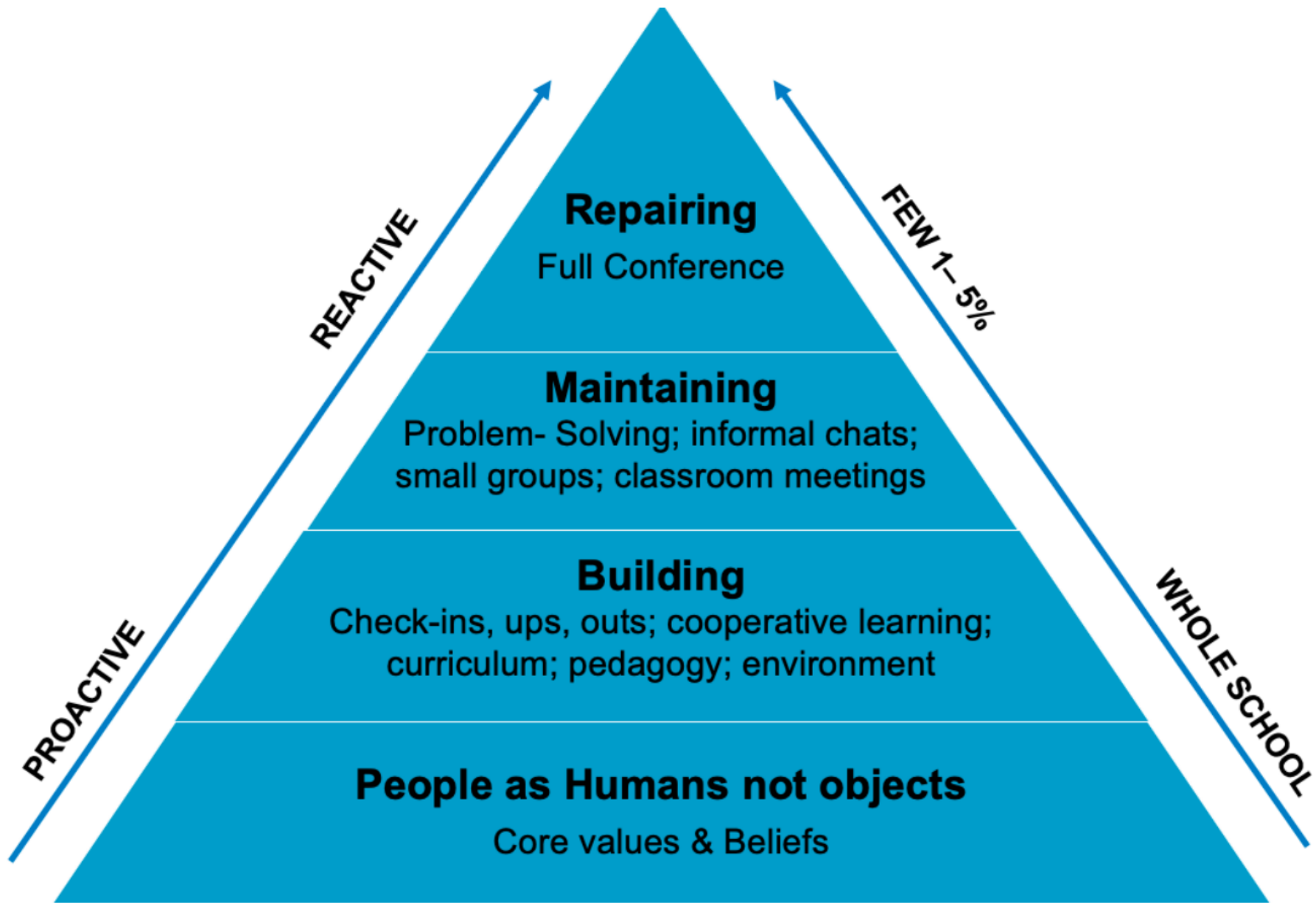
How of RP - Mechanics?



RP fosters the use of explicit practices including:

- 5:1 Relationship SCALE
- Fair Process
- Restorative Language (Statement & Questions)
- Circles
- Meetings
- Conferencing





Building Relational Learning Communities & Skills



Firhouse ETSS



Praise Pod - Stepside ETSS's way to Love Bomb!

Griffen CC and Lucan CS Community Initiative



St. Mary's Primary Friendship Keeper Programme







Responding to harm in a way that honours /repairs relationships & promotes empathy & accountability



Doing things differently...

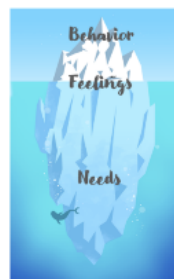
- Student Involvement
- Parental Involvement
- Consultative Decision-making
- Integrated Learning
- Ethical Education



Educate Together

Restorative Questions

1. What happened?
2. What were you thinking of at the time?
3. What have you thought about it since?
4. Who has been affected and in what way?
5. How could things have been done differently?
6. What do you think needs to happen next?



*bullying *voice-healing *growth mindset





Restorative Questions

1. What happened?
2. What were you thinking of at the time?
3. What have you thought about it since?
4. Who has been affected and in what way?
5. How could things have been done differently?
6. What do you think needs to happen next?





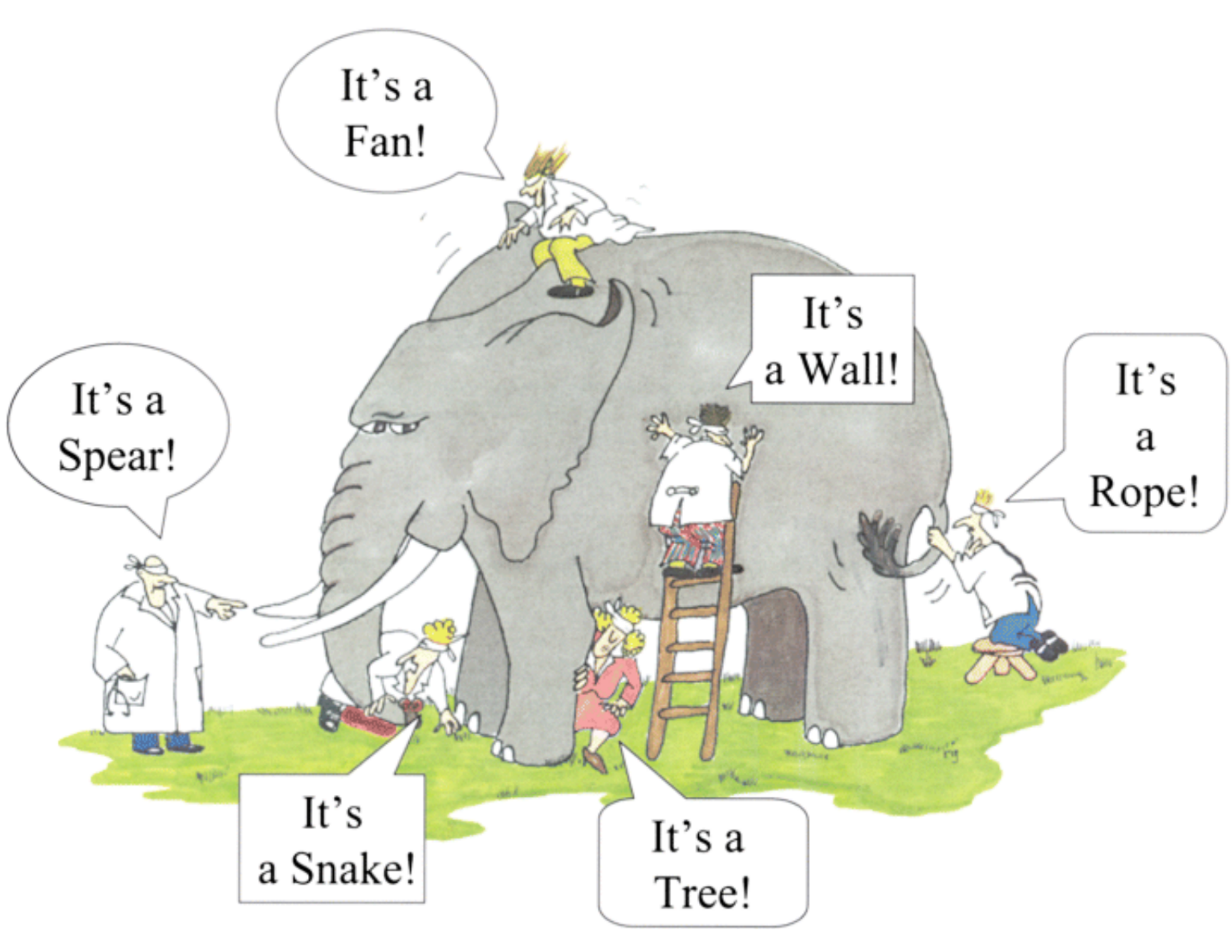


Restorative Questions

1. What happened?
2. What were you thinking of at the time?
3. What have you thought about it since?
4. Who has been affected and in what way?
5. How could things have been done differently?
6. What do you think needs to happen next?







It's a Fan!

It's a Spear!

It's a Wall!

It's a Rope!

It's a Snake!

It's a Tree!



Needs Prompt Sheet



*bullying

*voice- healing

*growth mindset



Traditional Behaviour Management VS Restorative Approach

Traditional

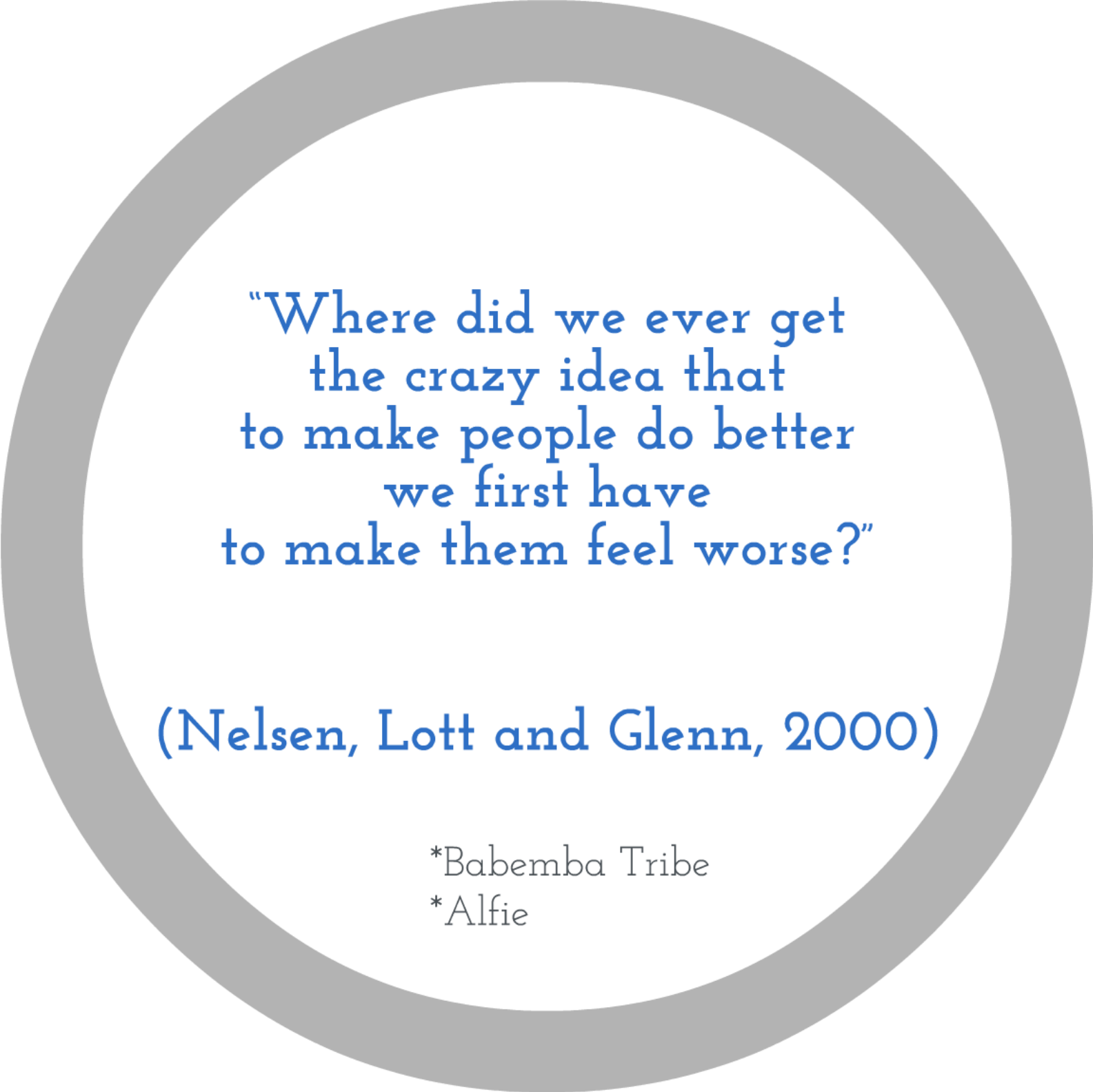
Focus on the past
Preoccupied with blame (defense)
Deterrence linked to punishment
(resentment & passive conformity at best)



Restorative

Focus on past, present and future
Emphasis on harm (empathy)
Deterrence linked to relationships and personal accountability (healing, empowerment, active responsibility & connection)





“Where did we ever get
the crazy idea that
to make people do better
we first have
to make them feel worse?”

(Nelsen, Lott and Glenn, 2000)

*Babemba Tribe

*Alfie

Relationship Window

(subject-object relationship)

High



Expectation (for being human)



Low



Support (for being human)



High

TO

People as **objects** to be managed

conditional acceptance
**power over*

WITH

People as **subjects** to be honoured

unconditional acceptance
**power with*

NOT

People as **objects** to be ignored

conditional acceptance
**power over*

FOR

People as **objects** of need

conditional acceptance
**power over*

Responding to harm in a way that honours/repairs relationships & promotes empathy & accountability



Responding to harm in a way that honours /repairs relationships & promotes empathy & accountability

Restorative Questions

1. What happened?
2. What were you thinking of at the time?
3. What have you thought about it since?
4. Who has been affected and in what way?
5. How could things have been done differently?
6. What do you think needs to happen next?



Blood and Thorsborne's (2005) five-stages for implementing restorative school change

Stage 1	Gaining commitment – Capturing hearts and minds
Stage 2	Developing a shared vision – Knowing where we are going and why
Stage 3	Developing responsive and effective practice – Changing how we do things around here
Stage 4	Developing a whole-school approach – Putting it all together
Stage 5	Professional relationships – Walking the talk with each other

..if we are not modelling what we teach, we are teaching something else..
(Hopkins, 2006, p.163)

Support, model & learn more!

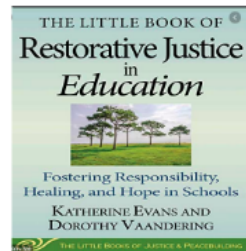


Restorative Values



Restorative Questions

1. What happened?
2. What were you thinking of at the time?
3. What have you thought about it since?
4. Who has been affected and in what way?
5. How could things have been done differently?
6. What do you think needs to happen next?



Who do I want to be in this situation?

Calm is a superpower!!!

- breathe
- ask questions

Restorative Reading



If you want to go fast, go alone.
If you want to go far,
go together.

African Proverb

Photo by Nisha Gill
f Symphony of Love

CONNECT

RP



Thank you!



www.connectrp.ie

@connect_rp

michellestowe@connectrp.ie